



RETROFIT NJ Program

How to Use the EJMAP to Determine Bonus Eligibility

Introduction

The EJMAP provides the public with a visual representation of the location of Overburdened Communities (OBCs) throughout the New Jersey.

OBC Communities are State-designated census block groups per the New Jersey Environmental Justice Law, N.J.S.A. 13:1D-157 where:

1. At least 35 percent of the households qualify as low-income households (at or below twice the poverty threshold as determined by the United States Census Bureau);
2. At least 40 percent of the residents identify as minority or as members of a State recognized tribal community; or
3. At least 40 percent of the households have limited English proficiency (without an adult that speaks English “very well” according to the United States Census Bureau).

Using the EJMAP

Please follow these steps to determine if a proposed project is within a State-designated Overburdened Community or Adjacent Community census block.

For a project to be eligible for RETROFIT’s 5% OBC bonus, it must be within the blue for yellow shaded areas on the OBC EJMAP.

Step 1

Click on the links below to access the OBC Map.

- Visit the *EJMAP OBC* website

[Overburdened Communities | NJ Environmental Justice Mapping, Assessment and Protection Tool \(EJMAP\)](#)

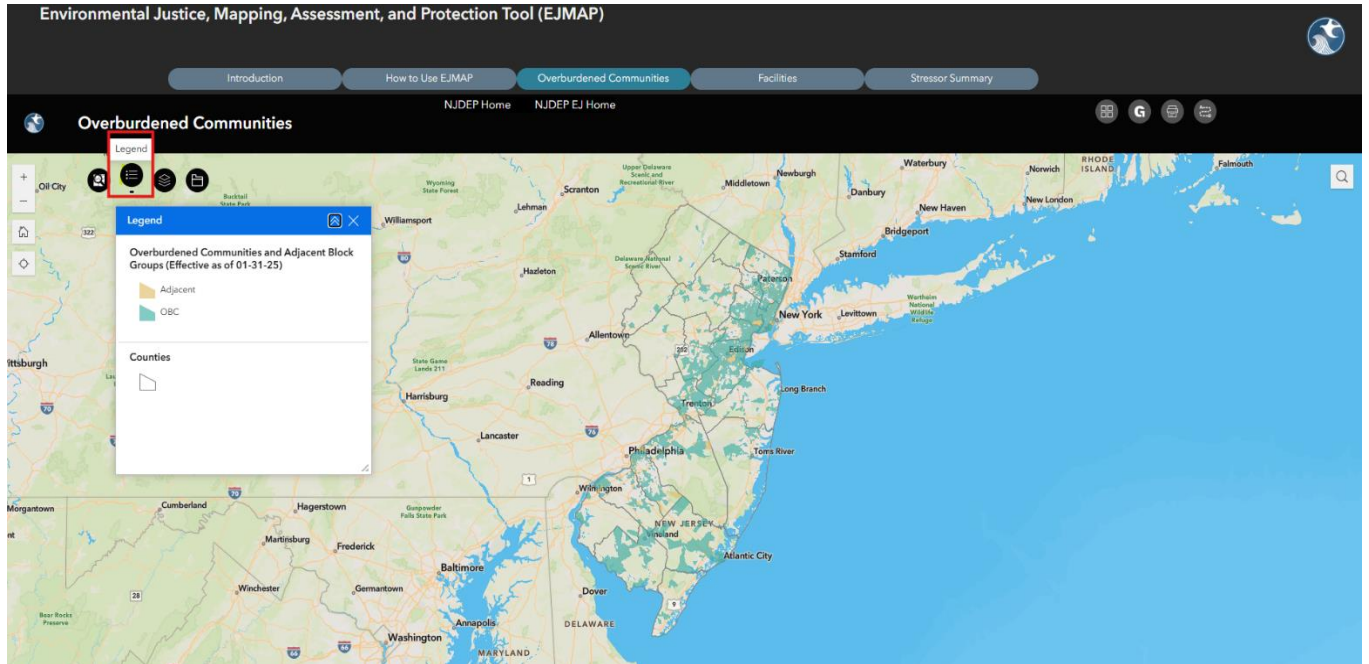
- Review the *How to Use EJMAP* website

[How to Use EJMAP | NJ Environmental Justice Mapping, Assessment and Protection Tool \(EJMAP\)](#)

Step 2

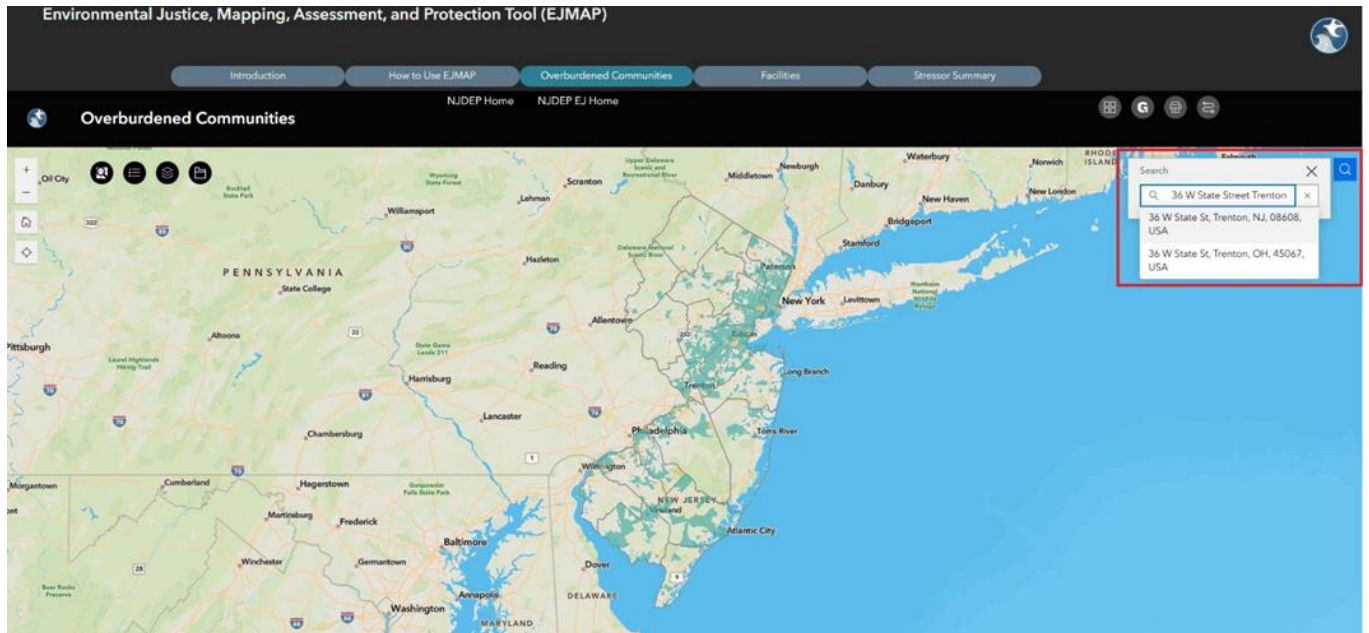
Use the OBC EJMAP Tool to search the project location to determine eligibility.

- Click the “Legend” button” to see how OBC and Adjacent Block Groups are visualized on the map (blue and yellow areas).

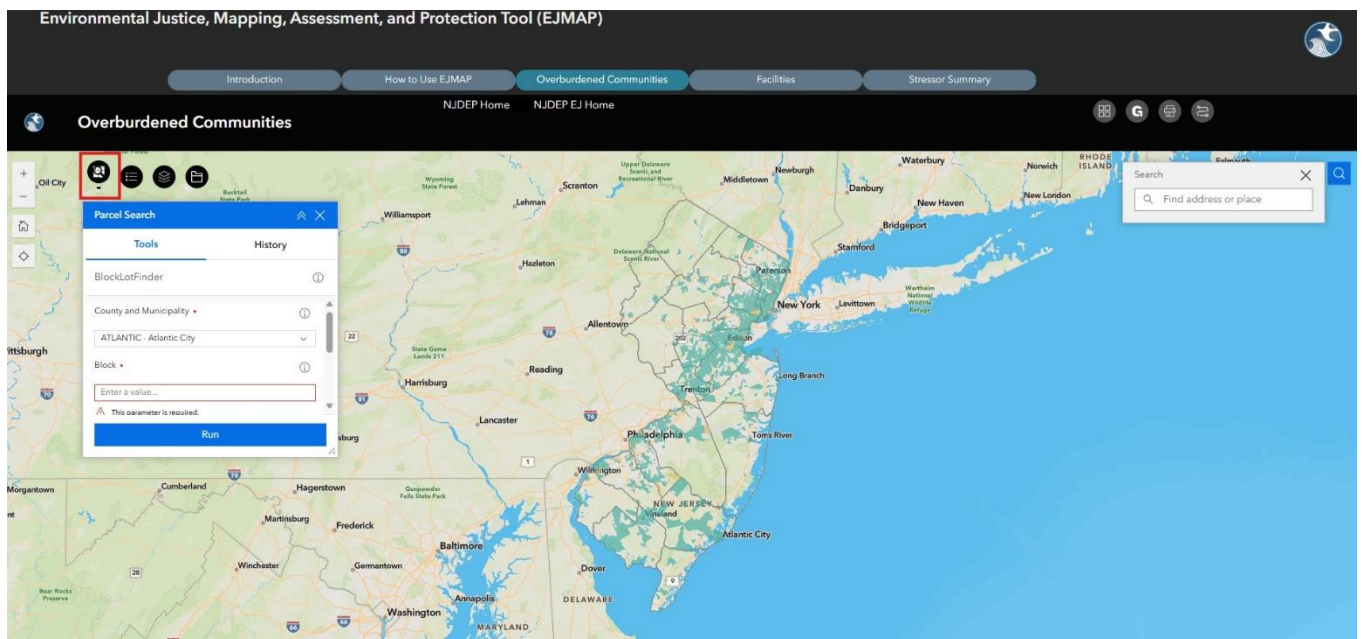


Step 3

Use the Address Search to locate the target property.



- Alternatively, you can use the Parcel Search to find a location.



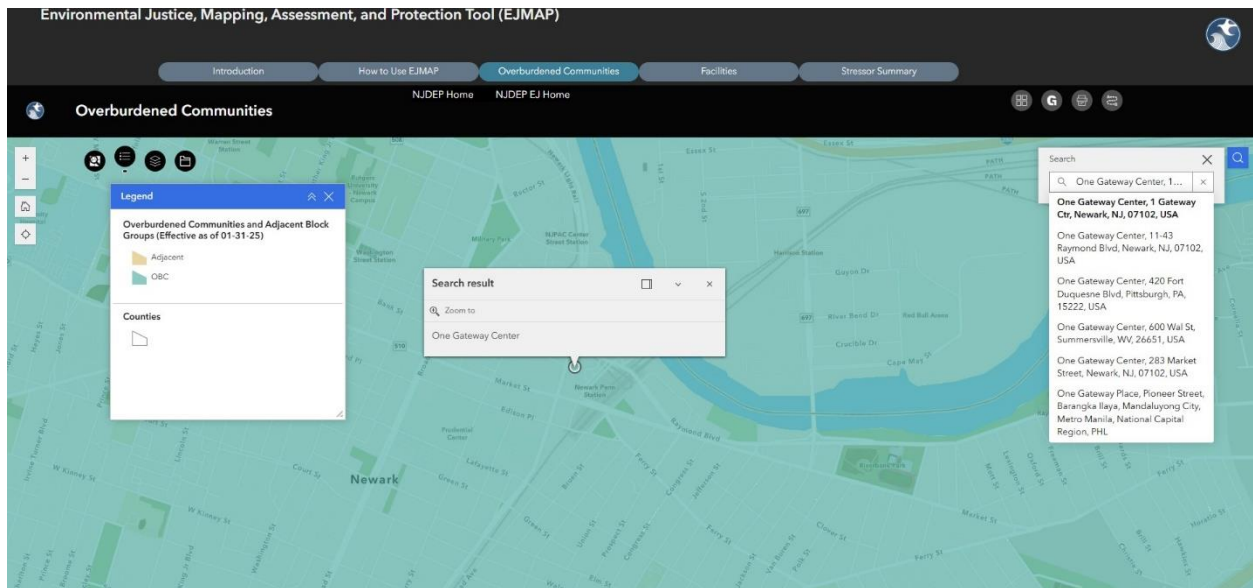
Step 4

Determine Eligibility

- Review search results to determine if the target property is within an OBC or Adjacent Block Group (blue or yellow shaded area).

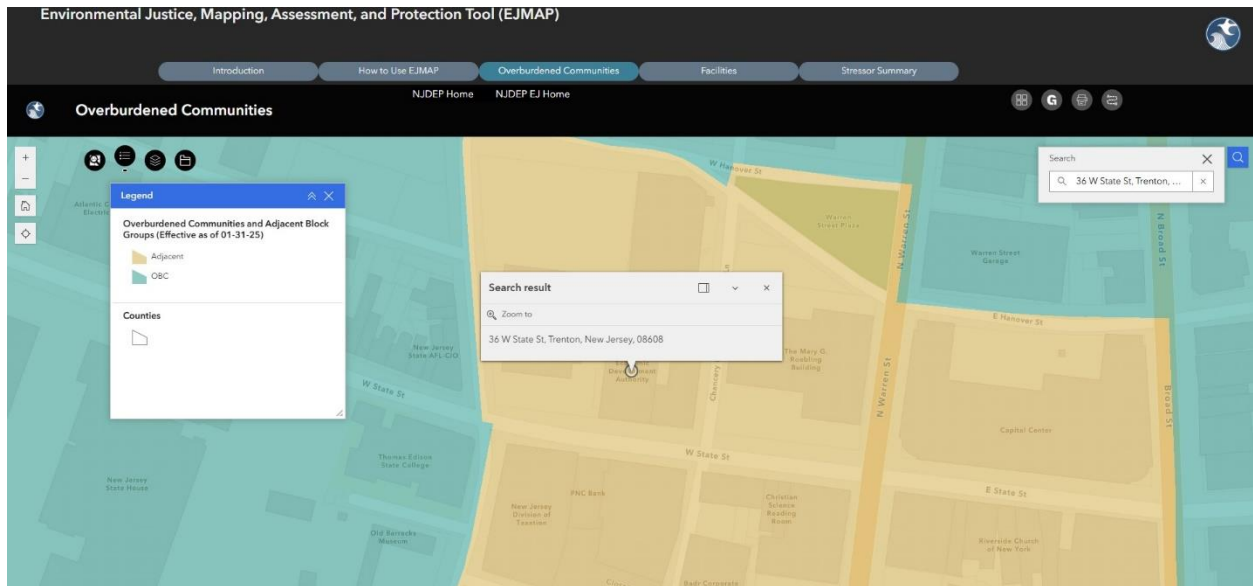
Eligible Project Location Example 1

OBC Community – One Gateway Center, Newark NJ



Eligible Project Location Example 2

Adjacent Block Group- 36 W State St, Trenton NJ



Ineligible Project Location Example

25 McWilliams Pl, Jersey City NJ

