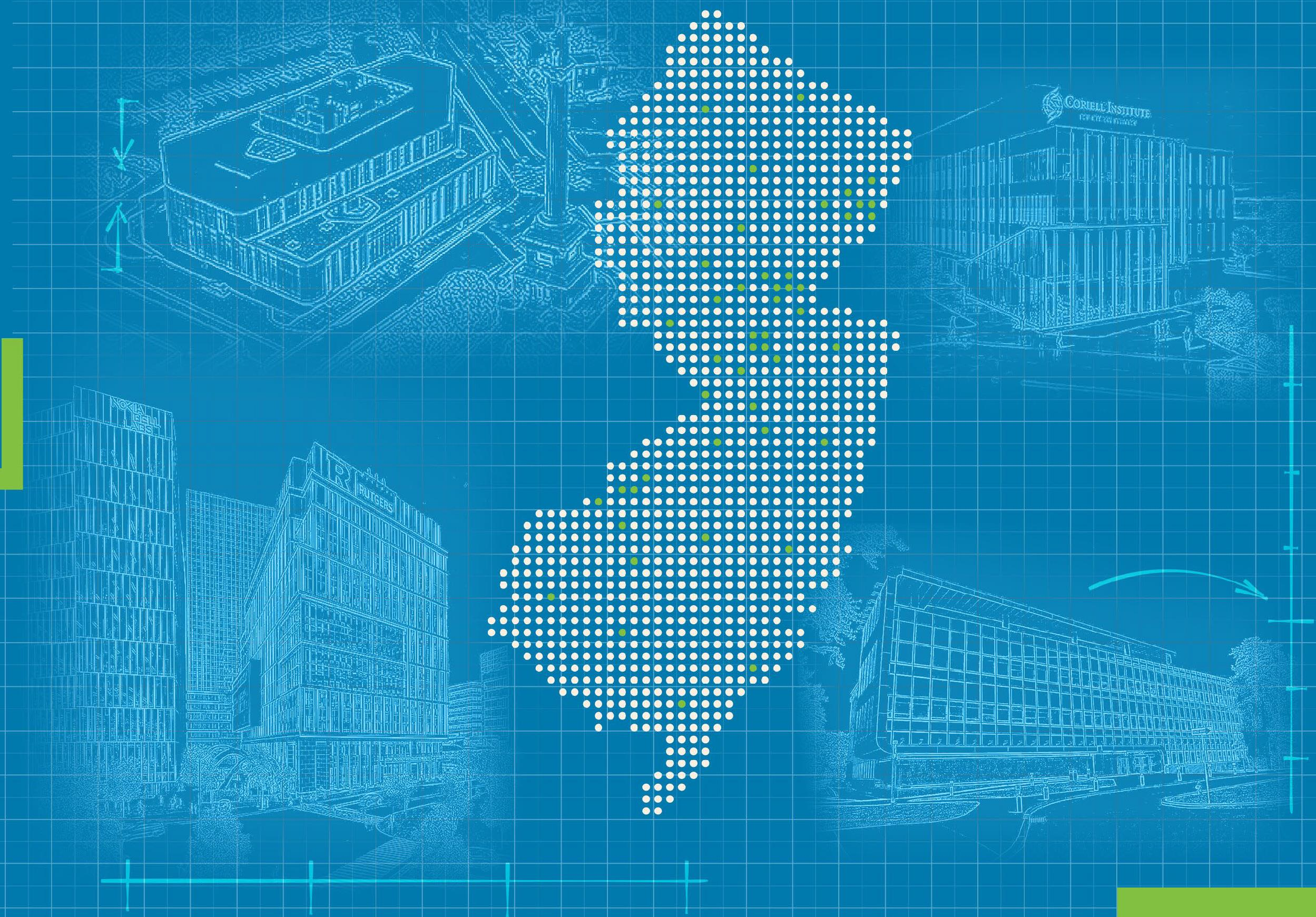


STRATEGIC INNOVATION CENTERS OVERVIEW

June 2026

NJEDA
ECONOMIC DEVELOPMENT AUTHORITY



WHAT IS A STRATEGIC INNOVATION CENTER?

Strategic Innovation Centers (SICs) are facilities designed to support research and development (R&D), innovation, entrepreneurship, or to address specific problems using innovative methods. These objectives are met by providing a range of services, including:

- Mentorship
- Networking opportunities
- Practical training
- Business support services
- Educational programs
- Access to testing, fabrication, or manufacturing facilities and equipment

NJEDA brings together partners with a common goal to advance a common industry initiative.

NJEDA's COMMITMENT

- Equity Investment: \$190M
- Strategic support

TYPES OF SICs

- Services (e.g. Accelerators)
- Real Estate (e.g. Incubators)

GOALS

- Support stakeholder's objectives of engagement, investment, acceleration of business strategies, alliances and other strategic initiatives

BENEFITS & IMPACTS OF SICs

SICs provide major benefits to businesses and entrepreneurs in New Jersey to accelerate growth through job creation, investment dollars, alliances and partnerships, among other strategic objectives.

12 SICs across: INFORMATION AND HIGH TECHNOLOGY, ADVANCED MANUFACTURING/ INNOVATIVE INDUSTRIES and LIFE SCIENCES, create critical infrastructure and conditions to grow the innovation economy.

In the first 12 months, SICs directly invested \$10+ million in 96 companies with 200+ jobs.

This work is done in collaboration with forward-facing partners in academia, government, and industry.



ANNOUNCED SICs



INFORMATION AND HIGH TECHNOLOGY

1. New Jersey Innovation Institute
2. NJ FAST
3. NJ AI Hub



LIFE SCIENCE

4. EdgeWorks
5. Helix
6. NJ CORIELL BioMedical
7. Accelerator for Innovation in Medtech (NJ AIM)
8. Nurture NJ Innovation Center (NNIC)



ADVANCED MANUFACTURING/ INNOVATIVE INDUSTRIES

9. Nokia Innovation Center
10. Atlantic County NJ Aerospace
11. HAX
12. NJ HAX Plasma Forge





The NJ AI HUB is a partnership to build a leading center that will support R&D, startup commercialization, and AI education in key sectors like life sciences, clean energy, and cybersecurity.

- **LOCATION:** 619 Alexander Road in West Windsor; opened March 2025.
- **PARTNERS:** CoreWeave, Microsoft, Princeton University.
- **TYPE:** Innovation center and accelerator.
- **MAGNITUDE:** A \$37M commitment, the NJ AI Hub operates within 6,500 sq. ft. of shared space to commercialize research into emerging companies by providing business training, operating services, and physical space.
- **NJEDA INVESTMENT:** \$15 million.
- **SECTOR:** Artificial Intelligence (AI).



HAX

HAX is the world's first and most active accelerator for pre-seed, hard tech startups focused on industrial, human health and climate.

- **LOCATION:** US flagship headquarters at 707 Broad Street in Newark, opened April 2024.
- **PARTNERS:** SOSV, NJIT, Rutgers, Princeton, amongst others for recruiting companies, use of lab space and interns.
- **TYPE:** Accelerator.
- **MAGNITUDE:** Program provides 6-month collaborative residency, hands-on engineering support and initial investment of \$250,000.
- **NJEDA INVESTMENT:** \$25 million.
- **SECTOR:** Industrial, human health and climate.



New Jersey Fintech Accelerator
At Stevens Institute Of Technology



NJ FAST brings together entrepreneurs with world-class ideas to New Jersey, increasing our state's inherently impressive talent pool, all while capitalizing on the resources and expertise of our partners.

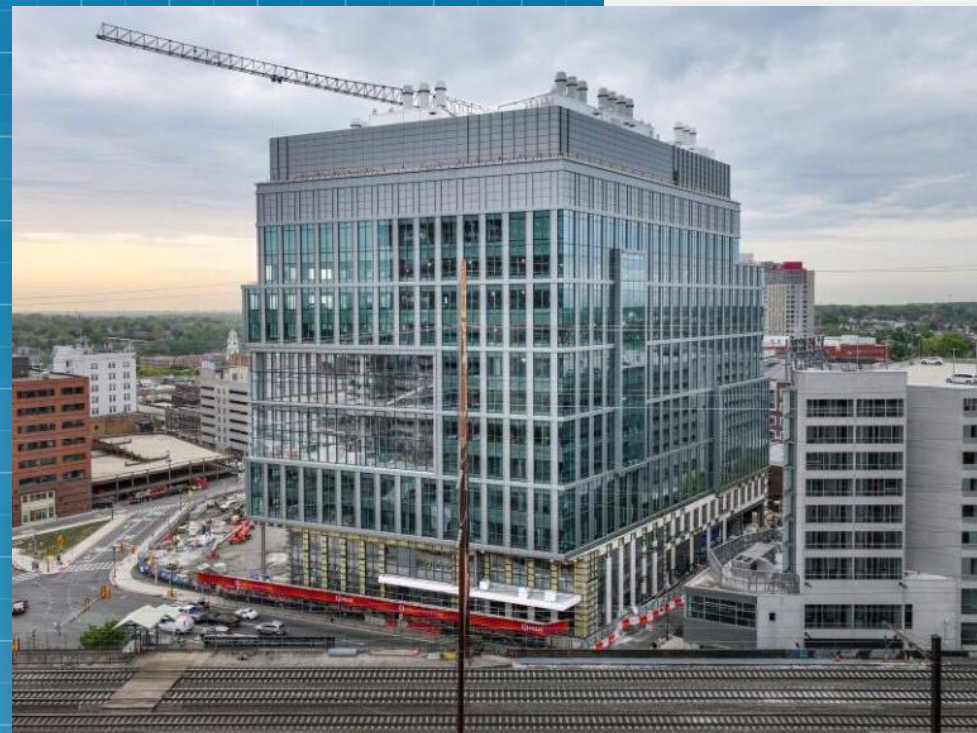
- **LOCATION:** 2 Hudson Place in Hoboken, with satellite at Prudential Headquarters in Newark; opened September 2024.
- **PARTNERS:** Stevens Institute of Technology, Prudential Financial, Plug & Play, and NJEDA.
- **TYPE:** Accelerator.
- **MAGNITUDE:** 2 cohorts per year featuring 15 participating companies per cohort generating at least \$10M of investment.
- **NJEDA INVESTMENT:** \$17.25 million; \$12.5 million fund.
- **SECTOR:** Fintech/Insurtech.





A multi-tenant innovation cluster, Helix (H1) is focused on health and life science.

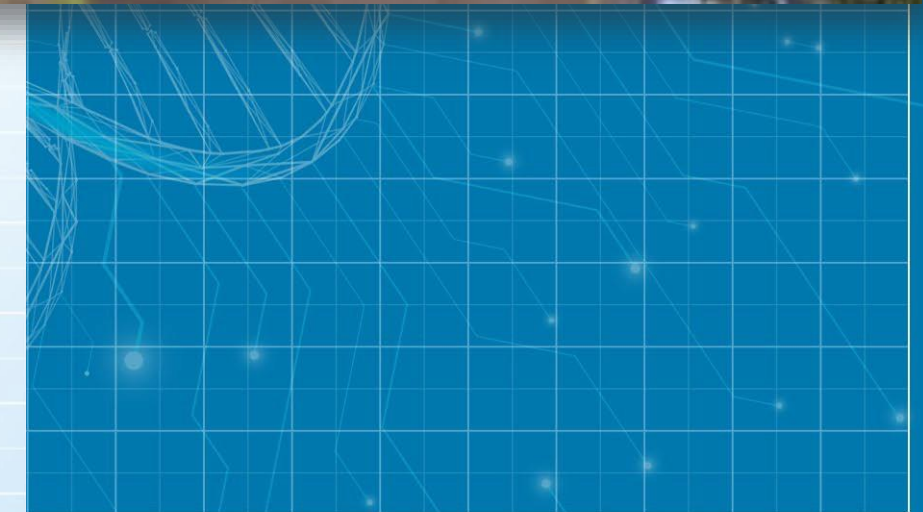
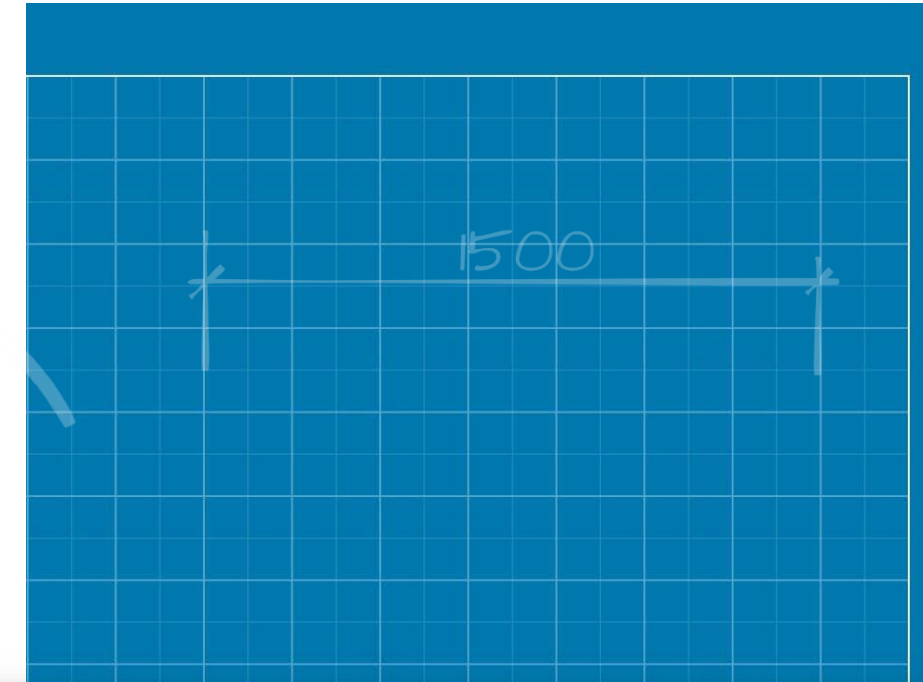
- **LOCATION:** New Brunswick, opening July 2026.
- **PARTNERS:** Portal Innovations (accelerator Partner), RWJBarnabas Health, Hackensack Meridian Health, the New Brunswick Development Corporation (DEVCO), Middlesex County, Princeton University, Rutgers University, Tel Aviv University, Atlantic Technological University, and Nokia Bell Labs.
- **TYPE:** Real Estate (shared environment.)
- **MAGNITUDE:** 12-story, 573k-sq.-ft. building, includes a translational research space, the Rutgers medical school, and the New Jersey Innovation Hub.
- **NJEDA INVESTMENT:** \$8 million.
- **SECTOR:** Health and life sciences.

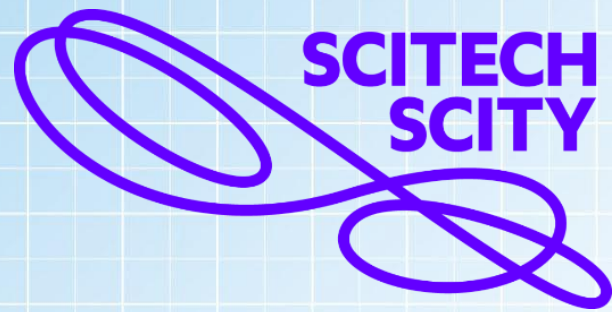




Announced in 2025, the NJ CORIELL BIOMEDICAL CENTER will be a bioscience hub with incubator and step-out lab space for biotech companies. Part of the Lewis L. Coriell Medical Research Center, the 45,000-sq.-ft. facility will include wet labs, a vivarium, convening, and office space.

- **LOCATION:** Opening in Camden in 2028.
- **PARTNERS:** Rutgers and Rowan medical schools.
- **TYPE:** Real Estate (bioscience hub).
- **MAGNITUDE:** The Center will host ~16 companies focused on cancer research, epigenetics, stem cells, and drug development.
- **NJEDA INVESTMENT:** \$20 million.
- **SECTOR:** Bioscience – the Studio will commercialize research into emerging companies by providing business training, operating services, and physical space.





EDGEWORKS will serve as the 8-story, 120k-sq.-ft. business creation hub for SciTech Scity. The Healthcare Innovation Engine will deliver real-world proofs of concept for digital health technologies.

- **LOCATION:** Jersey City, within the Scitech City Campus, opening 2029.
- **PARTNERS:** Liberty Science Center, Sheba Medical of Israel will be the anchor tenant, Academic partners include: FDU; NJIT; Princeton University; Rowan University; Stevens Institute of Technology.
- **TYPE:** Real Estate (co-working office.)
- **MAGNITUDE:** Anticipate 80 companies occupying private offices and co-working desks.
- **NJEDA INVESTMENT:** \$20 million.
- **SECTOR:** Digital health – housing laboratories, R&D spaces, office suites, shared spaces, exhibition gallery, and state-of-the-art conference center.



ATLANTIC COUNTY NEW JERSEY AEROSPACE CENTER

A 40k-sq.-ft. facility at the NATIONAL AEROSPACE RESEARCH & TECHNOLOGY PARK (NARTP) containing office and studios dedicated to research and development, innovation, and commercialization of emerging aerospace and aviation technologies; opening June 2026.

- **LOCATION:** Egg Harbor Township.
- **PARTNERS:** NJEDA and Atlantic County Improvement Authority (ACIA). Academic Partners: Rowan University, Rutgers School of Engineering, Stockton University, Embry-Riddle Aeronautical University, and the National Institute of Aerospace.
- **TYPE:** Real Estate (aerospace center).
- **MAGNITUDE:** The SIC will plan, develop, construct, and manage the innovation hub which shall consist of co-working spaces and studio spaces focusing on the aerospace industry to create 250 jobs total.
- **NJEDA INVESTMENT:** \$8.6 million.
- **SECTOR:** Aerospace.





New Jersey
Innovation Institute
An NJIT Corporation

Opened May 2025, the NJII VENTURE STUDIO will create new companies in technology and Life Science leveraging Intellectual Property from academia and industry.

- **LOCATION:** Within NJII's incubator in Newark.
- **PARTNERS:** NJII, NJIT along with other NJ research Universities.
- **TYPE:** Venture studio and fund.
- **MAGNITUDE:** The Studio will commercialize research into 10 newly created companies by providing business training, operating services, and physical space.
- **NJEDA INVESTMENT:** \$5.8 million; \$4.6 million fund.
- **SECTOR:** Information and high-technology and life sciences.



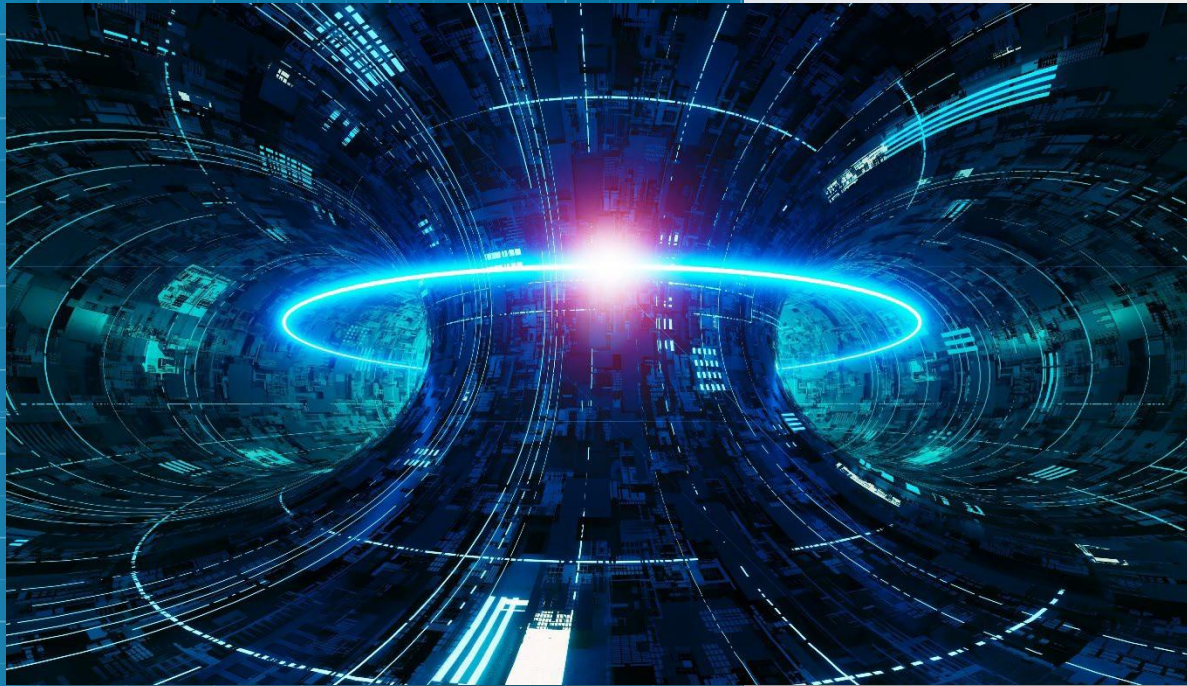
NOKIA

The NJ NOKIA INNOVATION CENTER will offer lab and office space for companies advancing frontier technologies, alongside the NJ BELL LABS VENTURE STUDIO to launch new companies using IP from within Nokia, academia and industry.

- **LOCATION:** Nokia's new HQ in New Brunswick, NJ, with 13,500 sq. ft. of world-class lab and office space. The Studio opened April 2025 at Murray Hill and will relocate to Helix 2 in 2028.
- **PARTNERS:** Nokia; NJIT and Rutgers.
- **TYPE:** Real Estate (co-working) and Venture Studio.
- **MAGNITUDE:** 20+ companies expected to locate upon opening in 2028. The Studio will commercialize 15 companies by providing business training, operating services, and physical space.
- **NJEDA INVESTMENT:** \$25 million total: \$10 million fund+\$10 million incubator
- **SECTOR:** Focus areas include Deep Tech in microelectronics, AI, advanced manufacturing, compute, IT, and NextGen communications.



PLASMA
TECHNOLOGY



CLEAN ENERGY

QUANTUM
COMPUTING

KF_33

KF_76

KF_92

NJ HAX PLASMA FORGE

Opening in Q3 2026, the NJ HAX PLASMA FORGE is an innovation hub to accelerate commercialization of plasma technologies in clean energy, microelectronics, space propulsion, and quantum computing.

- **LOCATION:** Near Princeton Plasma Physics Lab (PPPL) in Princeton.
- **PARTNERS:** SOSV, PPPL, Princeton University.
- **TYPE:** Accelerator.
- **MAGNITUDE:** Will support 25 deep-tech startups over 5 years through incubation, acceleration, and investment. PPPL will provide in-kind support including equipment, lab access, and technical services. The Forge will offer 10,000 sq. ft. of lab and coworking space for low-temp plasma, semiconductor, and energy R&D.
- **NJEDA INVESTMENT:** \$24.5 million: \$3 million fund.
- **SECTOR:** Plasma technologies in clean energy, microelectronics, space propulsion, and quantum computing.

SOSV



NJEDA
ECONOMIC DEVELOPMENT AUTHORITY

HAX

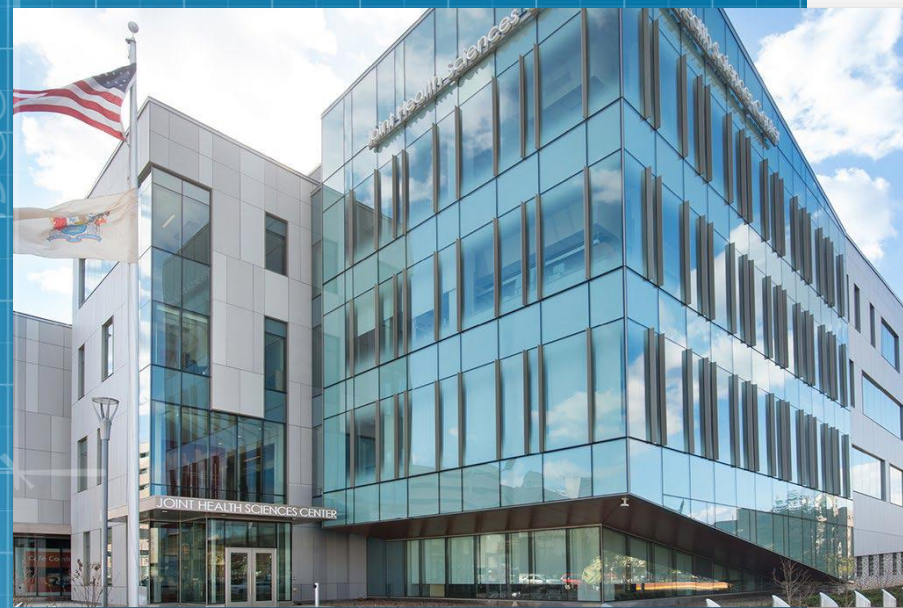
Nurture NJ Innovation Center (NNIC)

THE NJ MATERNAL & INFANT HEALTH INNOVATION CENTER (MIHIC) is a world-class accelerator, opening in Q1 2027, for related technology companies and promote overall scientific collaboration in the region.

- **LOCATIONS:** Trenton, at the Maternal and Infant Health Innovation Authority's new facility.
- **PARTNERS:** NJMIHIA, Capital Health, Plug and Play, Rutgers University, Capital Health, The Trenton Health Team.
- **TYPE:** Accelerator & Fund.
- **MAGNITUDE:** Operating within 5K sq ft at MIHIA, the accelerator will select 25 companies per cohort, 2 cohorts annually, with 30-50% of the companies within this sector.
- **NJEDA INVESTMENT:** \$3.8 million, including fund, accelerator, studio and operations.
- **SECTOR:** Life Sciences (maternal & infant health).



NJ Accelerator for Innovation in Medtech (NJ AIM)



THE NJ AIM is a world-class accelerator, opening in Q2 2026, for related technology companies and promote overall scientific collaboration in the region.

- **LOCATIONS:** The NJ AIM will include multiple locations at the Camden Joint Health Sciences Center and the Life Science Research Center at Glassboro.
- **PARTNERS:** Rowan University, Cooper University Health, Plug and Play and Garden State Venture Partners and NLC Ventures.
- **TYPE:** Venture Studio Accelerator & Fund.
- **MAGNITUDE:** Operating within 8.5k sq. ft. of co-working and lab space at the Joint Health Sciences Center in Camden. The accelerator will select 25 companies per cohort, 2 cohorts annually, with 40-60% of the companies within this sector.
- **NJEDA INVESTMENT:** \$5.7 million, including fund, accelerator, studio and operations.
- **SECTOR:** Life Sciences (medtech).

APPENDIX



BACKGROUND

On January 7, 2021, Governor Murphy signed the New Jersey Economic Recovery Act of 2020 (ERA) into law.

The ERA included amendments to the Authority's Economic Recovery Fund (ERF) to provide equity in innovation centers, research centers, incubators, accelerators, and other similar innovation-oriented entities.

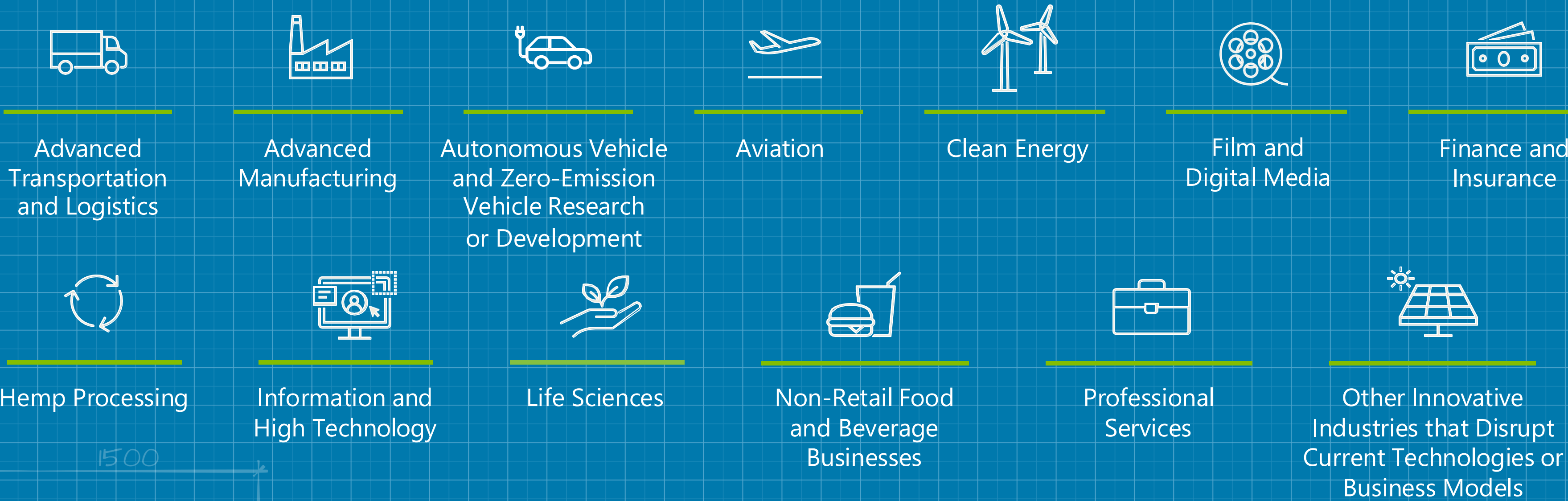
Governor Murphy has allocated \$258 Million for this initiative. The aim of funding strategic innovation centers is to accelerate economic recovery and drive the long-term growth of the State's innovation economy with a focus on supporting increased diversity & inclusion within the state's entrepreneurial economy.

1500

WHAT DO THESE CENTERS LOOK LIKE?

Strategic Innovation Centers can be accelerators, incubators, research centers, innovative service delivery centers, or **multi-tenant innovation clusters**. The common purpose is to create a **physical location** that builds a community of entrepreneurs and innovators collaborating on a shared goal.

Targeted Industries



CHARACTERISTICS OF A STRONG STRATEGIC INNOVATIONS CENTER PARTNER

Are you interested in partnering with NJEDA on a Strategic Innovation Center?

Potential proposals must support a broad range of companies/businesses in a targeted industry OR support increasing diversity and inclusion within the State's entrepreneurial economy. Proposals should also have public private partnerships and a university engagement component. Potential SICs must have a unique identity within the state.

PUBLIC PRIVATE PARTNERSHIPS

The private sector lead must have a minimum 1:1 match with both significant experience and financial commitment. The NJEDA will be an equity partner in the project and an advisor, but not a day-to-day operator.

ONE TO MANY

One location with a single focus that will help many entrepreneurial businesses.

UNIVERSITIES

The SIC should have an engagement plan that includes partnerships with NJ Universities and key community partners with an emphasis on advancing diverse entrepreneurs and underserved communities.

Bring your Strategic Innovation Center ideas to NJEDA!

NEW JERSEY BIOSCIENCE CENTER

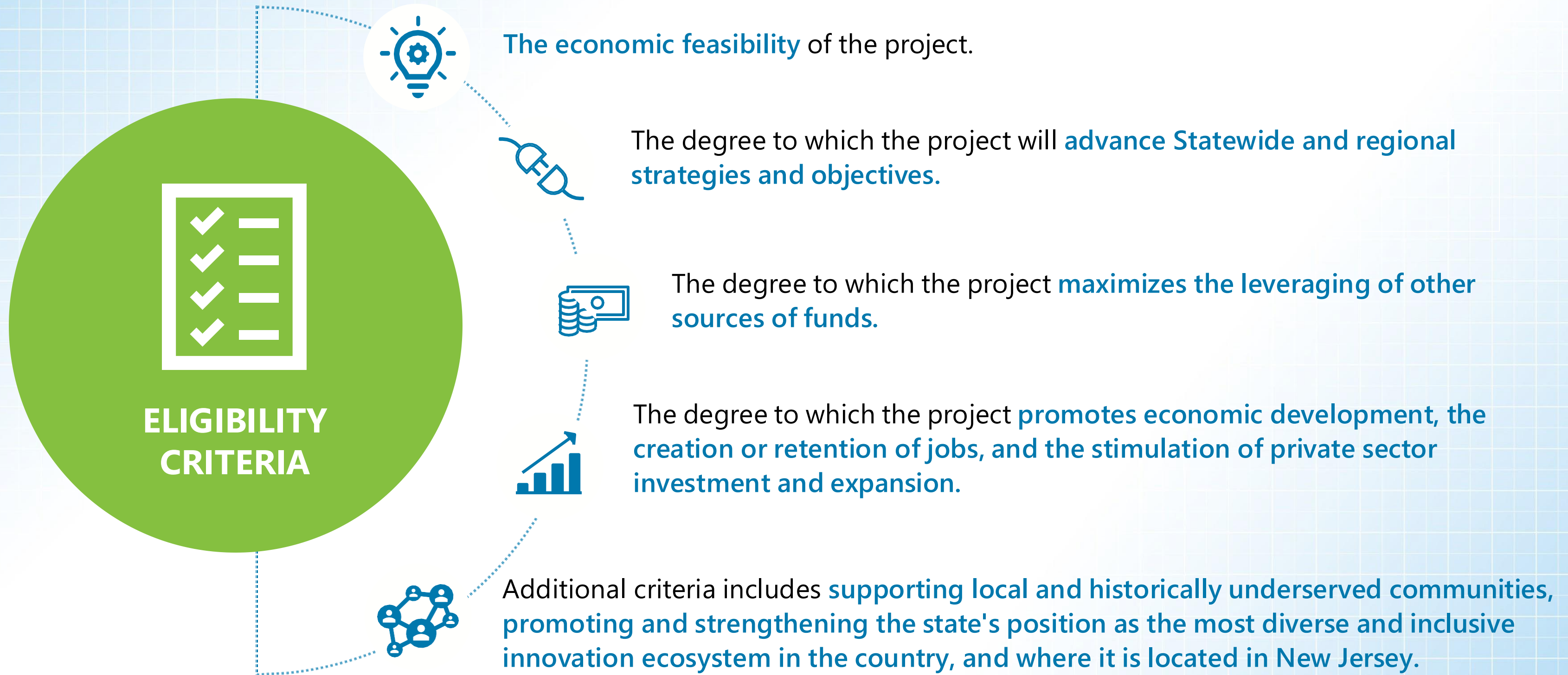


An SIC predecessor, The New Jersey BioScience Center (NJBC) is located in the heart of the state's "Bioscience Cluster" on Route 1 between Rutgers and Princeton Universities in North Brunswick, New Jersey.

- 5 buildings and 3 redevelopment sites on 50 acres including: incubator, post-incubator, independent R&D space, and build-to-suit-space.
- NJEDA acquired the NJBC in 1999 and has invested **\$70 million** into developing the center.



KEY INVESTMENT CONSIDERATIONS



SEED FUNDING TO ESTABLISH NON-PROFIT MEMBERSHIP ENTITIES

An additional SIC investment opportunity exists for those interested in an SIC partnership but perhaps not ready for the large-scale investment. The seed funding opportunity is a **memorandum of understanding between NJEDA and a non-profit such as a public university that provides seed funding plus staff resources to establish innovation centers and support its associated activities.**

The innovation center operates as a **separate 501©(3) nonprofit entity.** It is **funded primarily using non-SIC investment funds** through sources such as membership dues from private sector companies and other organizations within the target industry. The seed funding provided does not constitute membership in the innovation center; however, NJEDA may seek membership approval. NJEDA will also not possess interest of title in any equipment, supplies or other assets.

FOR MORE INFORMATION



njeda.gov/strategic-innovation-centers



@NewJerseyEDA



@NewJerseyEDA



New Jersey Economic
Development Authority

NJ EDA

ECONOMIC DEVELOPMENT AUTHORITY

